

Product Introduction

产 / 品 / 介 / 绍

S-Series Slewing Drive 敞开式 /



■ 型号Type: S14-2

技术参数Parameter

输出转矩Output Torque:12kN.m
倾覆力矩Tilting Moment:67.8kN.m
保持力矩Holding Torque:48kN.m
轴向静载荷Tatic Axial Rating:555kN
精度等级Precision: $\leq 0.17^\circ$
减速比Gear Ratio:85:1



■ 型号 Type: S17

技术参数Parameter

输出转矩Output Torque :10 kN.m
倾覆力矩Tilting Moment:135.6 kN.m
保持力矩Holding Torque :72.3 kN.m
轴向静载荷Tatic Axial Rating:970 kN
精度等级Precision: $\leq 0.15^\circ$
减速比Gear Ratio :102:1

WG Series Slewing Drive 双极传动 /



■ 型号 Type: WG14

技术参数Parameter

输出转矩Output Torque: 8 kN.m
倾覆力矩Tilting Moment: 67.8 kN.m
保持力矩Holding Torque: 48 kN.m
轴向静载荷Tatic Axial Rating:555 kN
精度等级Precision: $\leq 0.17^\circ$
减速比Gear Ratio:195:1

PE Series Slewing Drive 精密型 /



■ 型号Type: PDE3

技术参数Parameter

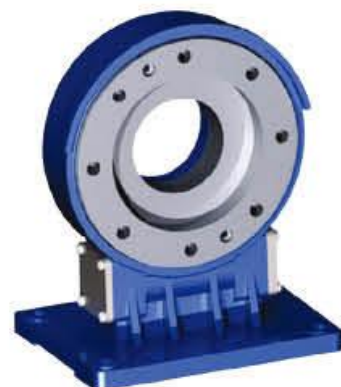
输出转矩Output Torque:400 N.m
倾覆力矩Tilting Moment:500 N.m
保持力矩Holding Torque:2000 N.m
轴向静载荷Tatic Axial Rating:30 kN
精度等级Precision: I : $\leq 0.08^\circ$ II : $\leq 0.12^\circ$
III: $\leq 0.15^\circ$



■ 型号Type: PE3C

技术参数Parameter

输出转矩Output Torque:400N.m
倾覆力矩Tilting Momen:1100N.m
保持力矩Holding Torque:2000N.m
轴向静载荷Tatic Axial Rating:30kN
精度等级Precision: I : $\leq 0.08^\circ$
II : $\leq 0.12^\circ$ III: $\leq 0.15^\circ$
减速比Gear Ratio:62:1



■ 型号Type: PVE7

技术参数Parameter

输出转矩Output Torque:1500 N.m
倾覆力矩Tilting Moment:6000 N.m
保持力矩Holding Torque:10400 N.m
轴向静载荷Tatic Axial Rating:133 kN
精度等级Precision: I : $\leq 0.05^\circ$ II : $\leq 0.07^\circ$
III: $\leq 0.11^\circ$

SE,PE Series Slewing Drive 围栏型水平式/



■ 型号Type: SE5A

技术参数Parameter

输出转矩Output Torque: 600N.m
倾覆力矩Tilting Moment: 3000N.m
保持力矩Holding Torque: 5500N.m
轴向静载荷Tatic Axial Rating: 45 kN
精度等级Precision: $\leq 0.2^\circ$
减速比Gear Ratio: 62:1



■ 型号Type: WE9

技术参数Parameter

输出转矩Output Torque: 8kN.m
倾覆力矩Tilting Moment: 35.6kN.m
保持力矩Holding Torque: 38.7kN.m
轴向静载荷Tatic Axial Rating: 578kN
精度等级Precision: $\leq 0.15^\circ$
减速比Gear Ratio: 62:1



■ 型号Type: ZE12A

技术参数Parameter

输出转矩Output Torque: 4.5kN.m
倾覆力矩Tilting Moment: 54.3kN.m
保持力矩Holding Torque: 43kN.m
轴向静载荷Tatic Axial Rating: 475 kN
精度等级Precision: 0°
减速比Gear Ratio: 78:1

ZE Series Slewing Drive 零间隙/



■ 型号Type: ZDE3

技术参数Parameter

输出转矩Output Torque: 240 N.m
倾覆力矩Tilting Moment: 500 N.m
保持力矩Holding Torque: 2000 N.m
轴向静载荷Tatic Axial Rating: 30 kN
精度等级Precision: 0°
减速比Gear Ratio: 62:1



■ 型号Type: ZE14A

技术参数Parameter

输出转矩Output Torque: 4.8 kN.m
倾覆力矩Tilting Moment: 67.8 kN.m
保持力矩Holding Torque: 48 kN.m
轴向静载荷Tatic Axial Rating: 555 kN
精度等级Precision: 0°
减速比Gear Ratio: 85:1



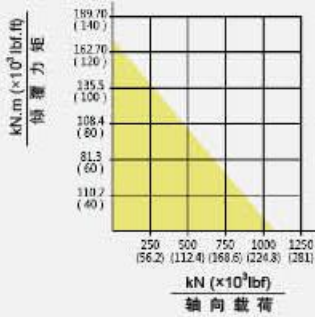
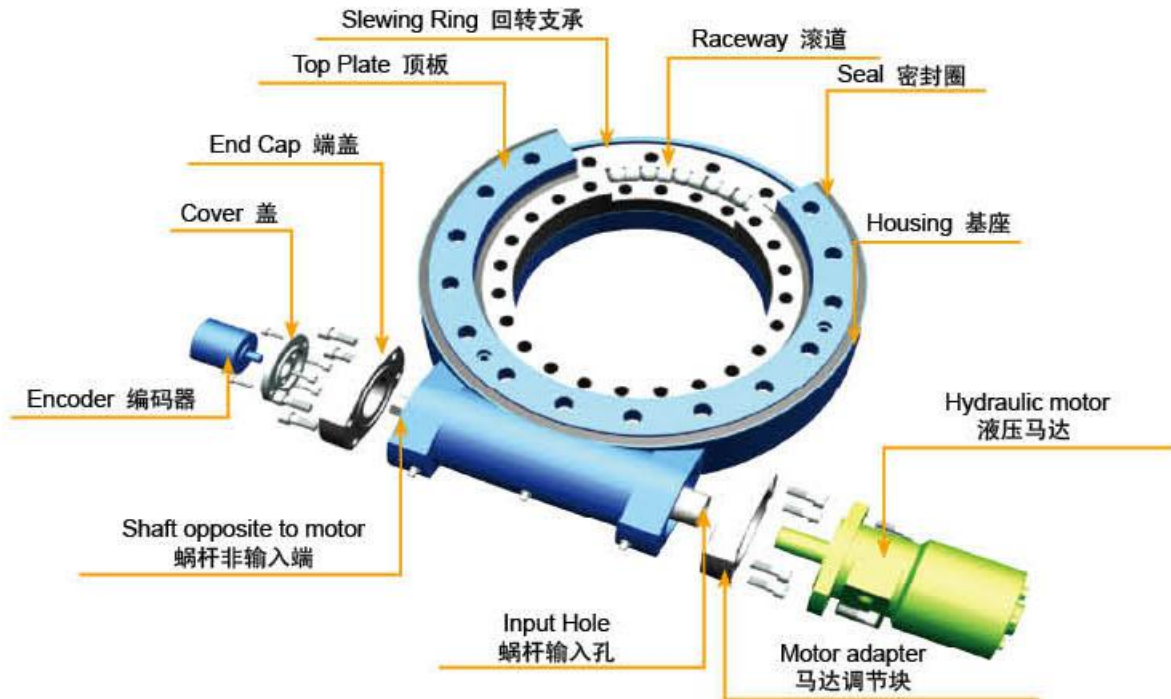
■ 型号Type: ZVE7

技术参数Parameter

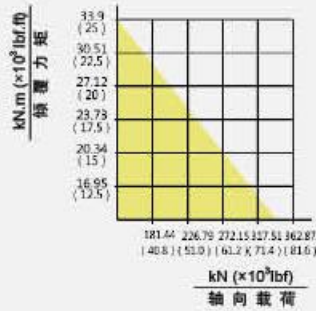
输出转矩Output Torque: 600 N.m
倾覆力矩Tilting Moment: 6000 N.m
保持力矩Holding Torque: 10400 N.m
轴向静载荷Tatic Axial Rating: 133 kN
精度等级Recision: 0°
减速比Gear Ratio: 73:1

Slewing Drive Parts Drawing

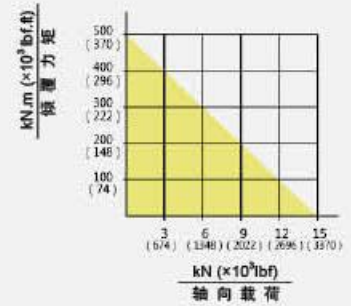
回 / 转 / 驱 / 动 / 分 / 解 / 图



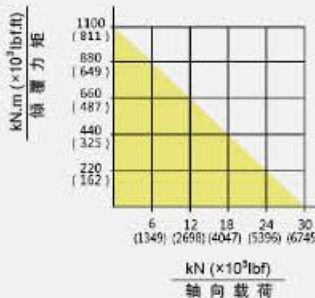
HSE2



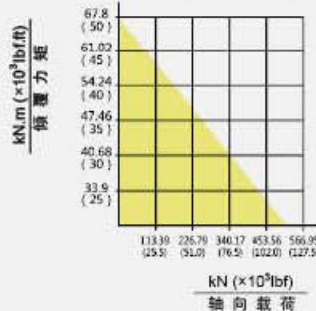
S9



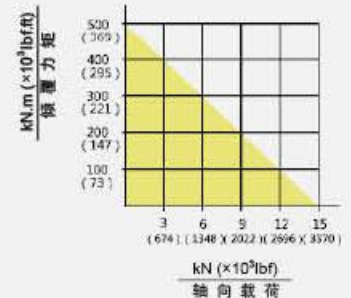
SDE3



SE3C



SE14



VE3



Application
应 / 用 / 新 / 域